



PROGRAMME FACT SHEET

Vacci360

Program Presentation

51%

Penta 3 coverage in Hadjer Lamis

16%

children are zero-dose nationally

3

pilot provinces in Chad

80%

national vaccination target by 2027

THE CHALLENGE



Manual Planning

Micro-planning relies on static, paper-based tools — health workers spend more time on logistics than vaccinating, lowering coverage in hard-to-reach areas.



Operational Disconnect

Plans are detached from field realities: actual travel times, seasonal flood access, and precise village geo-locations are rarely integrated.



Equity & Zero-Dose Gaps

Nomadic and hard-to-reach populations are frequently missed — existing systems lack the dynamic tracking to detect vaccination opportunities.

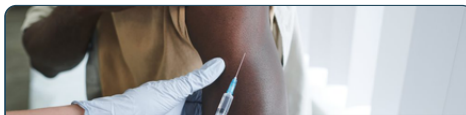
OUR APPROACH

Vacci360 is a digital decision-support platform that automates and optimizes vaccination micro-planning — acting as a **complementary analytical layer** on top of DHIS2, turning data into faster, more equitable operational decisions.



Geographic Access & Micro-Plans

- ▶ **Module 1:** Analyzes real geographic accessibility — village locations, actual travel times, seasonal access & never-visited areas (DHIS2 + GIS cross-reference).
- ▶ **Module 2:** Auto-generates realistic operational micro-plans and simulates coverage/cost/feasibility scenarios.
- ▶ **Partners:** Ministry of Health (PEV/DLMVSE), DSIS, DHIS2 & GIS teams
- ▶ **Location:** Hadjer Lamis, Kanem & Lac — Chad



Mobile & Nomadic Populations

- ▶ **Module 3:** Detects targeted vaccination opportunities for mobile communities using seasonal mobility data & livestock movement as a human presence proxy.
- ▶ Designed with clear ethical principles: community consent, no individual data, strictly health use only.
- ▶ **Partners:** HISP Rwanda, RISP, community & nomadic leaders
- ▶ **Location:** Nomadic corridors — Hadjer Lamis & Kanem



AI Operational Assistant

- ▶ **Module 4:** A conversational AI assistant for querying all available data (GIS, micro-plans, DHIS2) in plain language — with human validation at every step.
- ▶ Identifies uncovered zones, verifies plan feasibility, compares resource allocation scenarios.
- ▶ **Partners:** WHO, UNICEF, RISP partners
- ▶ **Location:** National level + 3 pilot provinces